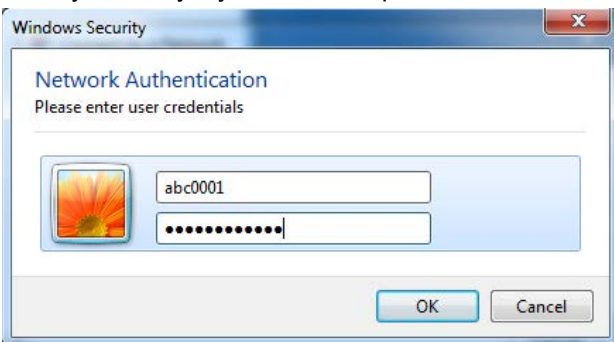


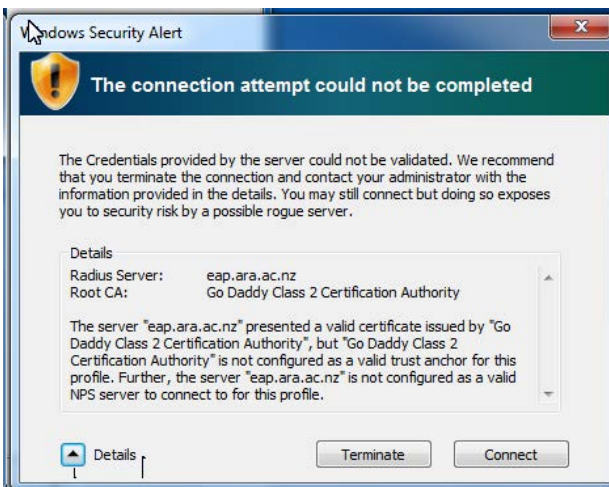
1. Ensure Wi-Fi is enabled.
2. Select the network icon from your desktop task-bar (bottom right).
3. The following menu will appear. Click on ARA-WIFI and tick connect automatically.



4. Enter your everyday Moodle/Computer username and password - click OK.



5. You will be asked to connect to a Go Daddy Certificate from eap.ara.ac.nz. The certificate thumb-print is: 69 D8 59 9B 14 03 CF B2 F0 1D E1 9A A8 AF 78 C1 C9 FF EB 7C.
6. Click Connect and choose the network type Public when prompted.



7. Once connected, you will only have to reconnect your device to the wireless network if your Ara password changes.

For Help:

If you are still unable to connect or require further assistance please contact the ICT Service Desk on (03) 940 8800, or email ICTServiceDesk@ara.ac.nz.